

St. Luke's LifeWorks

Where People Learn a Living



Life Long Learning

Programs for Youth

New Beginnings

Living Our Potential

Bread & Roses

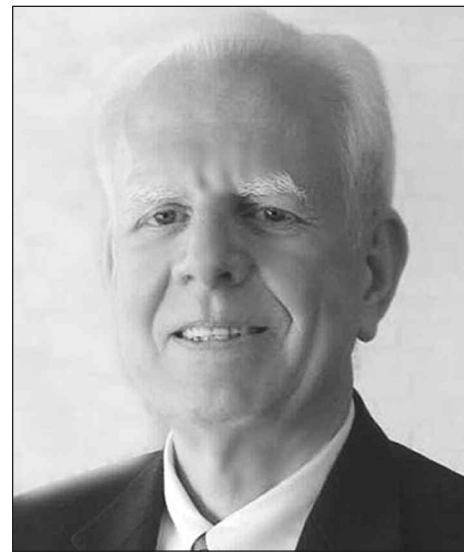
Spring 2009 Edition

As St. Luke's LifeWorks reaches its 130th year, a new chapter in its history has begun. Executive Director, the Reverend Richard L. (Dick) Schuster, retired effective June 1 after leading St. Luke's LifeWorks (SLLW) for more than 22 years. Under Rev. Schuster's guidance, the agency grew from humble beginnings in the South End to an organization that helps over 400 people a year turn their lives around. Today, LifeWorks provides unique Life Long Learning educational services as well as a variety of housing options that enable participants to achieve the goals of employment and self-sufficiency.

Dick is a local hero who has worked tirelessly to create opportunities for people in greatest need so they can have a brighter future. "Dick is a true visionary in his creative and cutting edge approaches to service delivery. He was never afraid to re-invent how to do things if it meant doing them better," said Johnnie Malloy, Chief Learning Officer at LifeWorks. When Dick saw a need to expand services to families, he seized the opportunity to purchase the old YWCA building with the help of a grant from the Melville Charitable Trust. In 1993, when the Center for Children and their Families opened, Dick's vision of being able to provide wrap-around services became a reality. Today, 14 other non-profits are located at the Center which serves over 30,000 people a year.

During his 22 years at LifeWorks, thousands of families, persons recovering from mental illness and people living with AIDS have come seeking help and found hope. The South End site has also grown immensely, and today is known as the Woodland Campus. Woodland is home to the agency's New Beginnings

St. Luke's LifeWorks Begins New Chapter As Executive Director Retires



Retiring Executive Director, the Reverend
Richard (Dick) L. Schuster

program for women, the Gilead program serving people recovering from mental illness, McKinney Residence serving persons living with HIV/AIDS and The Colony Apartments.

Reverend Schuster has championed numerous supportive-housing efforts both statewide and locally. He chaired the REACHING HOME Steering Committee; a campaign targeted at the development of 10,000 units of

supportive housing in Connecticut. He was the first president of the Connecticut Coalition to End Homelessness, and is one of four co-founders of Fairfield 08 – a regional initiative in Fairfield County. At LifeWorks, supportive housing sites include the Colony Apartments, Atlantic Park Apartments, and Metcalf House for individuals and Rose Park apartments for families.

Ordained as a priest in the Episcopal Church, The Rev. Schuster has served parishes in Middletown, Derby and Ansonia. Prior to his arrival at SLLW he was Assistant Director of Episcopal Social Services serving the Episcopal Diocese of Connecticut.

Dick has served on the boards of many organizations, including the South End Neighborhood Revitalization Zone and the Connecticut Association of Not for Profits. He has also served on the State's Community Mental Health Strategy Board and on the Advisory Council of the Center for Outcomes – a program of the Rensselaerville Institute. He was one of the founders of the Connecticut AIDS Residence Coalition, and most recently chaired the State of Connecticut Board for Mental Health and Addiction Services.

In speaking of his retirement, Schuster stated "My retirement from LifeWorks comes at a time when the organization is primed to enter a new era. The hearts and minds that will guide the process must be ready to seize the challenges that will be presented. It is time for new energy. I retire from LifeWorks but not from public life. I look forward to continuing to play a role in the not-for-profit sector."

A Letter From Our Board President

As you have read elsewhere in this newsletter, our beloved long-time Executive Director, the Reverend Richard L. (Dick) Schuster, has retired from St. Luke's LifeWorks after 22 years of inspired leadership. We will sorely miss his hand on the helm as we sail into a new era, but the team he built is ready to rise to the ever-evolving challenges that it is our special mission to address. Dick has trained us well.

St. Luke's LifeWorks has been helping people for 130 years. Our 130th year however, has been one of the toughest on record. The economy has affected our finances as well as our waiting list. The area has the highest rents in the nation and more people are losing their jobs and their homes. As an agency, we have to tighten our belts and leverage our resources to remain steadfast in our mission to help the people we serve reclaim their lives. The motto for not just our agency but most of the area's non-profits is to be as economically efficient as possible without compromising on the delivery of services.

Dick Schuster was never one to build a wall around St. Luke's LifeWorks. He has always been a master at building bridges. He taught us always to be open to, and actively look for, creative ways to work through cooperative ventures with other non-profit organizations to get the job done. Collaboration and partnerships will continue to be an important part of the answer as we move forward under new leadership.

Education is one of the areas where we rely heavily on both. Our partnerships with Norwalk Community College and J.M. Wright Technical School enable many of our participants to achieve their career goals. We are also benefiting from STEEPLE (Stamford Episcopal Education Project for Long-Term Employability) which is an effort by the religious community to recruit volunteers to help tutor and mentor our participants as they strive to achieve a better education. Additionally, we are looking at a variety of ways to share resources with other agencies and through our collaborations, strengthen what we have to offer at a cost that is less than what it may have been before.

In an effort to reduce the cost of getting our message out to the community, please help St. Luke's LifeWorks **GO GREEN**. We need your e-mail addresses. In an effort to save expenses (and trees!), we want to be able to distribute future newsletters and activity updates to you via the computer. For this purpose (and only this purpose, we assure you) please help us (and the trees!) by sending your e-address to Ccurtis@stlukeslifeworks.org.

Finally, we are enclosing a remittance envelope. It has often been said that the best measure of any community is how it treats its weakest and most helpless members, and St. Luke's LifeWorks is committed to making our community the best it can be. We thank you for your donations, past and future, as we look forward to another 130 years of helping those in need help themselves.

Respectfully,
Dana E. Low

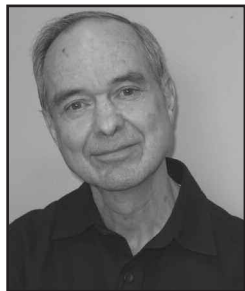
BOARD SPOTLIGHT



Dwayne Bethea

Dwayne Bethea's progression to the board seems natural since he has been volunteering at LifeWorks for a number of years. At the Center for Children and their Families he is a sought-after tutor and can be found every holiday season in the gymnasium where he helps in whatever capacity is necessary during the Holiday Gift Collection.

Timothy (Mac) Bradford comes to St. Luke's LifeWorks through Hewitt Associates. His years of experience as a consultant, teacher, and partner at Hewitt Associates are welcome attributes to the board of St. Luke's LifeWorks where we look forward to his contribution to the Strategic Planning Committee.



Timothy Bradford

McKinney Residence Celebrates 20 Years

It was just over 20 years ago in April, 1989 that St. Luke's LifeWorks, in cooperation with St. Luke's Episcopal Church in Darien and the McKinney Foundation (founded by the widow of Stewart McKinney, Congressman for the 1st District who died of AIDS) responded to the AIDS Pandemic by opening McKinney Residence. Established as the first residential program for people living with AIDS in the state of Connecticut, McKinney Residence initially provided housing for ten people living with HIV/AIDS at the Clinton Avenue site. In April of 2006 McKinney Residence moved to its current location on Woodland Place where it now offers supported transitional living for up to 19 people living with HIV/AIDS.

The transition to our Woodland Campus was made possible with the help of funding from the Red Ribbon Foundation. The move allowed the program to expand and accommodate the combination of the Georgetown Residential Program for single adults and the McKinney Program, also accommodating single adults under one roof. There were many advantages to this endeavor including increased access to services and closer proximity to employment opportunities. It also made it possible to transform the Georgetown Residence, which was also a program for individuals, into one that serves two families. Our other residence for families is



Nicole Hazard, Executive Director of the Red Ribbon Foundation, with SLLW Board President Dana Low, and SLLW Director of Corporate & Foundation Relations Rhonda DeLetis in front of McKinney House in Stamford.

McKinney Residence in Fairfield. It serves two families as well.

The Red Ribbon Foundation, a Greenwich based non-profit organization committed to raising money to fight HIV/AIDS, assisted in the expansion of McKinney Residence by providing grants for relocation and operating expenses. This relocation increased capacity and provided greater privacy for program participants as well as greater opportunity for social involvement and easier access to services. Through LifeWorks' Life Long Learning initiative, participants in the McKinney Program learn new skills, improve their education, understand how to become and stay healthy both physically and mentally, as well as prepare for living independently in the community. Since opening, over 250 people have benefited from this transitional living residence and have moved on to more independent living within our community. In 2001 St. Luke's LifeWorks merged with Bread & Roses. Today, as part of

St. Luke's LifeWorks, Bread & Roses programs for people living with HIV/AIDS provide services at all three locations.

Mark Your Calendar

Get Your Car Washed for FREE and Support LifeWorks!

Come to The Depot at 45 Heights Road (on the corner of Noroton Avenue) in Darien, or Old Greenwich Elementary School on Sound Beach Avenue in Greenwich, on July 12th between 10a.m. and 1p.m. and get your car washed. This fundraiser is being held by volunteers from Outward Bound to raise awareness about St. Luke's LifeWork's mission and needed contributions. To help make this event a success by sponsoring a volunteer or donating supplies, please email Elaine at Elaine@stlukeslifeworks.org

Voluntary Services

2008 Holiday Gift Collection Helps Children in Need



The Puri Family sorts gifts.

Nearly 500 volunteers – individuals, civic, corporate, and religious groups from all over Fairfield County attended two giant wrapping parties during December at St. Luke’s LifeWorks Franklin Common, where they wrapped toys and gifts for children affected by poverty, homelessness and HIV/AIDS. The lobby, mezzanine and gymnasium of Franklin Common were beautifully decorated by Greenwich Country Day students and employees from Adaptive Marketing while CulinArt generously donated sandwiches and

brownies for the wrapping parties. This year’s Holiday Gift Collection was once again sponsored by Two Men and a Truck, Friends of Children, Inc., and Purdue Pharma.

St. Luke’s LifeWorks’ Holiday Gift Collection is made possible each year because of the generosity of hundreds of individuals who give money, donate gifts and volunteer their time. Gifts were donated by individuals who fulfilled “Wish Cards,” providing three gifts per child for the children served by 30 different agencies in Fairfield County. Corporations such as Pepsi donated nearly a hundred guitars for the older children, who are often harder to shop for. Additional donations came from AI’s Angels of Norwalk, Casper Company, Country Living Associates, D.L. Ryan Companies, G.E. Capital Markets, Greenwich Reform Synagogue, First Congregational Church of New Canaan, Brunswick School, Fairfield University, Knight Libertas, LLC, Stamford MOMS Club, National Charity League, Mitchell’s of Westport, St. Catherine’s of Sienna, various Boy Scout and Girls Scout Troops, CDW Corporation, Brookfield High School and PricewaterhouseCoopers, (among others).

The Holiday Gift Collection began in 1989 when a circle of friends in Fairfield County got together to collect gifts for families living with HIV/AIDS in Bridgeport, CT. During the Collection’s first year, 250 gifts were provided to 26 families. The 2008 Holiday Gift Collection provided 5,000 holiday toys and gifts to 1,700 children that for many are the only gifts they receive.



Thank you Two Men and a Truck!

BRIAN MACKEN HONORED FOR VOLUNTEER EFFORTS

As a requirement for becoming an Eagle Scout, 17 year old Greenwich High School Senior, Brian Macken recently completed the Boy Scout Leadership Service Project (BSA Troop 11-Greenwich) by building the Gilead Outreach Vegetable Garden at SLLW’s Woodland Campus. The project involved building a secure fence and gate, preparing the beds for planting the vegetable garden, and beautifying the adjacent grounds at St. Luke’s LifeWorks’ Gilead House. Brian works two jobs and paid for half of the supplies himself including the poles, metal fencing, chicken wire and flowers. D’Amico Landscaping donated nine bags of mulch and Brian’s parents purchased the rest. Brian had 17 people, including scouts, friends and family helping him



Brian Macken, pictured here with SLLW Life Planning Coach Lisa Nau.

with the project which was guided by St. Luke’s LifeWorks Life Planning Coach, Lisa Nau and Director of Voluntary Services, Elaine Osowski.

The vegetables from the garden will be utilized for a Life Long Learning cooking class, where St. Luke’s LifeWorks’ program participants learn about the value of fresh vegetables and the use of herbs when cooking. Of the participants Brian said, “I felt very rewarded when the residents of Gilead House told us (the scouts) how much they appreciated how hard everyone was working for them.” Brian spent 33 hours planning and executing the project and another 121 hours to complete it with his crew. Brian will be attending Indiana University in the fall. Thank you Brian and congratulations!

Life Long Learning

Norwalk Community College and J.M. Wright Tech Partner with St. Luke’s LifeWorks to Provide Life Long Learning

Many participants at St. Luke’s LifeWorks are benefiting from collaborations with Norwalk Community College (NCC) and J.M. Vocational Technical School (Wright Tech). “There are 11 participants currently enrolled in a Pilot Partnership through NCC’s Extended Studies Program and four at Wright Tech,” said Jim Bingham, Senior Educator at St. Luke’s LifeWorks. At Wright Tech, St. Luke’s LifeWorks participant Louisamene Raymond smiled and said, “My first two test scores were 92 and 83.” Louisamene and Josephine Pierre appreciate Jim Bingham’s assistance helping them to study for tests in the Certified Nurse’s Assistant (C.N.A.) program. According to Cynthia Distasio, R.N., Department Head at Wright Tech, “The SLLW participants in the C.N.A. class are all caring, courteous and kind people. They have picked a wonderful profession that suits them well. The goal of the program is to train competent professionals that can achieve economic independence and have a sense of satisfaction with their jobs.” Jim Bingham concurred, “The certificate programs will qualify people for jobs in a pay range of \$12-\$17 an hour. Students enrolled in NCC’s accounting and respiratory therapy programs can expect to make \$40K-\$50K.” He continued, “These partnerships further the

mission of St. Luke’s LifeWorks by helping our participants achieve self-sufficiency.”

At Norwalk Community College participants are taking part in Extended Studies Certificate programs in Bookkeeping, Patient Care Technician and Medical Billing. Sasha Rivera, New Beginnings – Family Program participant, is grateful for both partnerships with NCC and Wright Tech. Sasha has received her High School Diploma through Life Long Learning, completed her C.N.A. at Wright Tech, and will soon be graduating from the Patient Care Technician program at NCC. Atlantic Park Apartment Tenant Ann Rustici is an accountant by trade who wanted to brush up on her skills before returning to the workforce. “My professor at NCC was great; he made the course fun for his students.” She was thrilled to have been able to participate in the Accounting Certificate program and is now looking for a part-time job. Lyra Watkins, from St. Luke’s LifeWorks’ New Beginnings Women’s Program, began the certification for Medical Billing and Coding at NCC last fall. Lyra says that “St. Luke’s LifeWorks and NCC have given me a great opportunity. Now that the job market seems to be opening up in this field, with my certification, I am confident I’ll be able to find a job.”



Josephine Pierre

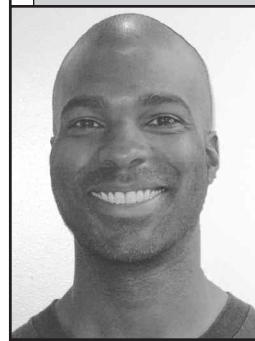


Sasha Rivera



Lyra Watkins

NEW INTERNSHIPS ANNOUNCED THROUGH LIFE LONG LEARNING



FACILITIES INTERN
David Douglas is grateful for the opportunity to get to know SLLW staff and participants.

Job preparedness skills are being gained first hand by six participants of St. Luke’s LifeWorks who have accepted 10-week paid internships in LifeWorks’ Life Long Learning initiative. Participants were required to submit a cover letter and resume and a completed job application for each position. As with any hiring process a formal interview was conducted with the Chief Learning Officer and the supervisor from each specific employment area. Applicants were requested to present themselves with confidence and discuss their qualifications for the job. Navigating through the hiring process and developing skills acquired during the internship help prepare our participants to succeed as they pursue careers outside of St. Luke’s LifeWorks. Congratulations to our new interns who have accepted positions in the areas of Maintenance, Front Desk, Life Long Learning, Voluntary Services, New Beginnings – Family, and New Beginnings – Women’s Programs.



Omesha Tweedy is the intern for New Beginning’s Women’s Program. She has accepted a permanent position at the front desk at the Center for Children and their Families.

FootSteps – Youth Services Update

Women of Vision Provide Miles of Smiles on Reading Night at The Center for Children and their Families

Many of the children at the Center for Children and their Families were seen wearing smiles on a recent Monday night when they participated in Women of Vision's Reading Night during the group's bi-monthly visit to St. Luke's LifeWorks. Founded in September 2001, Women of Vision Fairfield County (WoVFC) includes women from Fairfield and Westchester counties in its membership. They come from different backgrounds, age groups and churches, but all share a passion for serving the poor, especially women and children. WoVFC see themselves as members of a global community in their endeavor to address the injustice of poverty, specifically child poverty.

"Working as a volunteer at Art and Reading Night with the enthusiastic and creative children at St. Luke's LifeWorks has convinced me of the tremendous merit of this program," states Kathy Rider, in describing her voluntary work at the Center.



Kathy Rider gets a big smile from Tatiana Young on reading night.



Barbara Hathaway reads to Gael Deleon.

Kathy Rider, together with Didi Streit, are Co-Chairs of WoVFC Domestic Service. The partnership between WoVFC and St. Luke's LifeWorks began in December 2002 when Christine Palumbo contacted St. Luke's LifeWorks to learn how the organization was helping women and children and to explore partnership opportunities. In 2003, WoVFC began and completed a capital renovation project and upgraded the residential areas at St. Luke's LifeWorks Center for Children and their Families. WoVFC led another painting project for the organization in November 2004 and more recently donated a gift of \$16,500 for Life Long Learning. According to Didi Streit, who has been involved with the SLLW program since its inception, "WoVFC's financial support of the Family Housing Program is augmented by personal involvement with families, especially children, through providing an enriched environment for reading and the arts."

St. Luke's LifeWorks Volunteer Highlighted in CPTV Documentary

Dwayne Bethea has been chosen to be profiled in a documentary for Connecticut Public Television titled 'The Power of Giving: Stories of Volunteerism.' Dwayne is a long time volunteer for St. Luke's LifeWorks; he tutors children and participates in the Holiday Gift Collection every year, doing whatever it takes to get

5,000 presents wrapped for children affected by poverty. Dwayne was recently elected to the board and is featured in this newsletter in our board member spotlight. The documentary will follow Dwayne throughout his day, sharing his giving spirit with all who cross his path. It will premiere on June 25th.



Dwayne Bethea volunteers at SLLW providing home-work help to students like Vashon Shannon.

Gifts Made in Honor or Memory

GIFTS HONORING

Four children & families from Mr. & Mrs. Wayne Wright
 Melanie Burrows & Peter Donahoe; Joan D. Ensor; Stefanie Foote; Joe & Katie Haddock; Sally Howe & Rick Hubbard; Jane & John Mather; Rosamond Mikkelsen; Mary & Bob Rounsavall; Kris Solem & Barbara Taylor; Jenny Hyde & Leif Erik Solem; Rachael Solem; Ofelia & Vik P. Solem from Imogen Howe & Paul Solem
 Betsy Adams & Patsy Whitman from Ms. Christiana H. Johnson
 Mr. Mark Basile & Mr. Steven Schnepf from Ms. Jane Malakoff
 Richard & Pat Cavanagh from Mr. & Mrs. Henry Hubschman
 Kevin & Christopher Copeland from Mr. & Mrs. Richard E. Eldh, Jr.
 Donna Dewitt from Ms. Susanna Williams
 Family & Friends from Ms. Patricia M. Harbilas
 Anthony & Caroline Gaglio from Mr. Frank Gaglio Jr. and Mr. & Mrs. Frank Gaglio
 Greg & Cokie Hamm from Mr. & Mrs. Tom Hamm
 The friendship and generosity of Annie & George Harvey from Mr. & Mrs. Harvey Schneider

Judith's 49th Birthday from Ms. Doris Stonuey
 Patrick J. Lynn and Francis & Richard Mount from Mr. & Mrs. James C. Lynn
 Neal P. Myerberg from National Committee on Planned Giving
 Barak Obama from Dr. Winthrop and Dr. Caroline Adkins
 50th Anniversary of Hyde & Ann Perce from Mr. & Mrs. Steve Scholly
 Peter Richiski, Jr. from Ms. Helen Richiski
 Mary Sullivan from Dr. Winthrop and Dr. Caroline Adkins
 Rev. Richard L. Schuster from Rev. & Mrs. Donald G. Miller
 Nancy Bogen Torchio from Ms. Patricia Bogen
 Betty Walker from Ms. Nancy Geary
 Ms. Weldon, Ms. Prior, Ms. Decker & Ms. McNulty from Ms. Melissa Levethan
 Rev. James Wheeler and St. John's Episcopal Church from Mr. & Mrs. Raol A. Wolf
 The Weston Book Club from Ms. Lisa A. Hanners & Mr. Stephen R. Patton

GIFTS REMEMBERING

Susan Ackorn from Dr. Lowell Ackiron
 Aggie Ardito from Ms. Patricia Messina
 Tragg O. Bailey from Leonie Middleton
 Philip G. Barber from Mrs. Helen R. Barber
 Alma Bell from Mr. William C. Bell
 Martin S. Bojnec Jr. from Mrs. Marilyn M. Foster
 John Fiske Boorum from Mr. & Mrs. Warren J. Boorum
 Mr & Mrs Adrien Bourcier from Ernest A. Bourcier
 Charles J. Bozak from Ms. Veronica C. Staplefield
 Edith F. Bruning from Mr. & Mrs. William C. Howland
 Darrell & Darelyn Brown from Ms. Vivian W. Brown
 Ricky Burnsed from Mr. & Mrs. Samuel Burnsed
 Mayme Churchill from Mr. & Mrs. Curtis J. Crawford
 Donald J. Collins from Ms. Mary Ellen Elias
 Patrick Collins from Mr. & Mrs. Geardino
 Vincent Copeland from Mr. & Mrs. John A. Kegaly and Mrs. John P. Lynch
 Americo F. Crescio and Americo J. Crescio from Mrs. Americo F. Crescio
 Donald L. Daych from Ms. Denise J. Daych
 Bob Dewitt from Mr. & Mrs. Arthur Layton

Charlie Dieterich from Ms. Diana M. Dieterich
 Wayne Digiorgio and Salvatore Digorgio from Rosemary DeGeorge
 Lt. Col. Henry H. Dunlop from Mr. & Mrs. Henry Dunlop
 Jay Foote from Ms. Imogen Howe and Mr. Odin Paul Solem
 Mary Barbara Linton Haacke from Ms. Barbara A. Linton
 Bill Hammond from Ms. Jessica Spring
 Dan Hickey from Ms. Peggy Hickey & Family and Mr. & Mrs. Shaun M. Malloy
 Thomas J. Ho from Annie Ho
 Harold Jacobs from Mr. & Ms. Mark S. Glassman
 Richard Krauss from Ms. Patricia Messina
 John F. Kelly from Mr. & Mrs. Daniel Russo, Mr. & Mrs. Stephen H. Weitzer, Mr. & Mrs. Kevin Garrity, and Mr & Mrs. Anthony Pomponi
 Jeanne Martel from Ms. Ruby P. Carlucci
 Raymond Neil Massa from Lawrence E. Allen and John Wilson
 Stanley Miller from the Groom Room
 Jack Molinaro from Mr. & Mrs. Louis Molinaro
 Linda Nazareth from Ms. Sherry Kane and Mr. Ralph Nazareth
 William Osowski from Mrs. Patricia T. Osowski and Mrs. William Osowski
 Florence Retter from Mr. & Mrs. Christopher H. Bradley

Rosalie Robotti and Vincent Sheridan from Mr. & Mrs. Shaun M. Malloy
 Sheila Steere from Ms. Ruth P. Wilson and Ms. Lianne Larson
 Jean Thomson from Meredith Derr
 Leo Wyard from Mrs. Susan Verrochi
 Alice R. & Gary J. Yanicky from Ms. Elizabeth A. Yanicky

Gifts Remembering Barrie Spelling (Past SLLW Board President)
 Mr. & Mrs. Jan Bennink, Ms. Kristen Bremner, Ms. Katherine A. Burt, Mrs. George Crossman, Mr. Robert J. Carty, Mr. & Mrs. John A. Cleary, Ms. Meredith Derr, Mr. James P. Healy and Ms. Amy V. Harr, Mr. & Mrs. Barrie Hookins, Mrs. Koren Gaines-Hoover & Mr. Herbert Hoover, Ms. Mary W. Jennings, Mr. & Mrs. A.V. Jones, Mr. & Mrs. James V. Kriz, Mr. & Mrs. Richard Lannamann, Mr. & Mrs. Dana Low, Mr. & Mrs. Shaun M. Malloy, Medical Missions for Children, Inc, Mr. Paine, Mr. & Mrs. Wulf Paulick, Ms. Dianne E. O'Neill, Mr. & Mrs. Robert S. Rimmer, Mr. & Mrs. John Schlachtenhaufen, Mr. & Ms. Laurence G. Schneider, Mr. & Mrs. Leigh D. Silliphant, Mr. & Mrs. Howard T. Slutz, Mr. Robert C. Spelling, Mrs. Jillian Sulsh, Ms. Ruth P. Wilson and Ms Lianne Larson

St. Luke's LifeWorks
141 Franklin Street
Stamford, CT 06901
(203) 388-0100
www.learnaliving.org

PRSR STD
US POSTAGE
PAID
Permit #111
06776

Where People Learn a Living!

Thanks to Linda Bowen of Computer Marketing Services, Inc. in New Milford for her courtesy mailing of this newsletter.

This Is Our Last Print Newsletter

Help SLLW
GO GREEN today!

Send us your E-mail address
to get on our new E-Newsletter Mailing List!

Please e-mail your e-address to:
ccurtis@stlukeslifeworks.org.

Please include your full name and home
address so that we can carefully match
you to our records.

Sincere Thanks From LifeWorks

Important. Your e-mail address will not be sold, lent, bartered or used
for any other purpose than communicating directly with you.

SAVE THE DATES

SATURDAY, JUNE 20TH, 8AM-4PM
SPRING CLEANING FOR THE HOMELESS
Premium Tag Sale to Benefit

St. Luke's LifeWorks - 141 Franklin St

To Donate new or gently used items contact Carolyn or Kelly
at SLLWDonation@aol.com

Deliver by appointment or arrange for pick up. All items are tax deductible.



SUNDAY, JULY 12TH
FREE CAR WASH AT DARIEN DEPOT AND
OLD GREENWICH ELEMENTARY SCHOOL

For more info or to sponsor a volunteer
e-mail Elaine@stlukeslifeworks.org



OPEN HOUSES - St. Luke's LifeWorks

Franklin Common (141 Franklin Street), 8:30am
June 8th, July 13th, August 10th

Woodland Campus (8 Woodland Place), 5:30pm
June 22nd, July 27th, August 24th

For more info or to register, contact RDeletis@stlukeslifeworks.org

Our Core Values: We are a Community Whose Members are Guided by a Shared Belief in:
Fundamental Human Dignity ♦ Unlimited Human Potential ♦ Powerful Individual Responsibility